

Industry-Leading 600 lbs. Capacity

High-backed, contoured 25" wide seat ensures a comfortable and secure ride. Sturdy, stationary armrests and reinforced footrest add stability for safer transfers. Slides out from wall as it pivots at top landing.

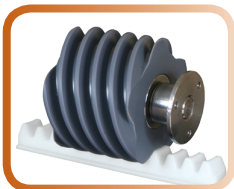
Features & Benefits

- Patented helical worm drive for safe, smooth, energy-efficient ride
- High capacity seat, arm and footrest frames
- Folding footrest
- Integrated constant-pressure controls
- Swivels at landings for entry and exit
- Powerful enough to travel up to a 45-degree incline
- DC drive even runs during power interruptions
- Clean installation and maintenance; no grease or lubricants to apply or clean up
- 600 lbs. capacity – the industry's best



As with all Pinnacle stair lifts, the HD model is engineered to the highest industry standards and designed for optimal comfort, convenience and aesthetics.

| Specifications | SL600HD |
|--|---|
| Maximum Weight Capacity: | 600 lbs. (272 kg) |
| Motor Output Amps at Rated Load: | 16 amps |
| Overspeed Governor: | Yes |
| Track (rail) Type: | Clear Anodized Aluminum |
| Travel: | 16' Standard; 40' Maximum (12.2 m) |
| Average Number of Return Trips per Charge: | 10 - 20 |
| Symmetrical Lift: | Yes |
| Control in Armrest: | Yes |
| Need to Open Chassis to Install or Change Sides: | No |
| Lift Mounts to Steps or Wall: | Steps |
| Minimum Folded Width: | 17" (43 cm) |
| Minimum Footrest Height: | 3.6" (9 cm) |
| Clear Distance Between Armrests: | 25" (63.8 cm) |
| Floor to Seat Height Low / High: | 22" |
| Minimum Wall to Stair Side of Rail: | 12" (30.5 cm) |
| Seat Depth: | 16" (40.6 cm) |
| Backrest Height From Top of Seat: | 18" (45.7 cm) |
| Electrical Requirements: | 120VAC 15A |
| Operation Power: | 24V DC Battery |
| Speed: | 14 fpm |
| Incline Range: | 27 - 45° |
| Drive System: | Helical Worm Drive |
| Warranty: | 3-Year on Components 10-Year on Rack 1-Year on Batteries |
| Safety Devices: | Centrifugal Overspeed Brake Bi-directional Footrest obstruction Sensor Swivel Seat Cut-off Switch Final Limits Seat Belt Chassis Obstruction Sensors |



The energy-efficient patented worm drive requires no greases or lubricants.



Safety sensors on carriage and footrest stop the lift instantly at obstacles.